

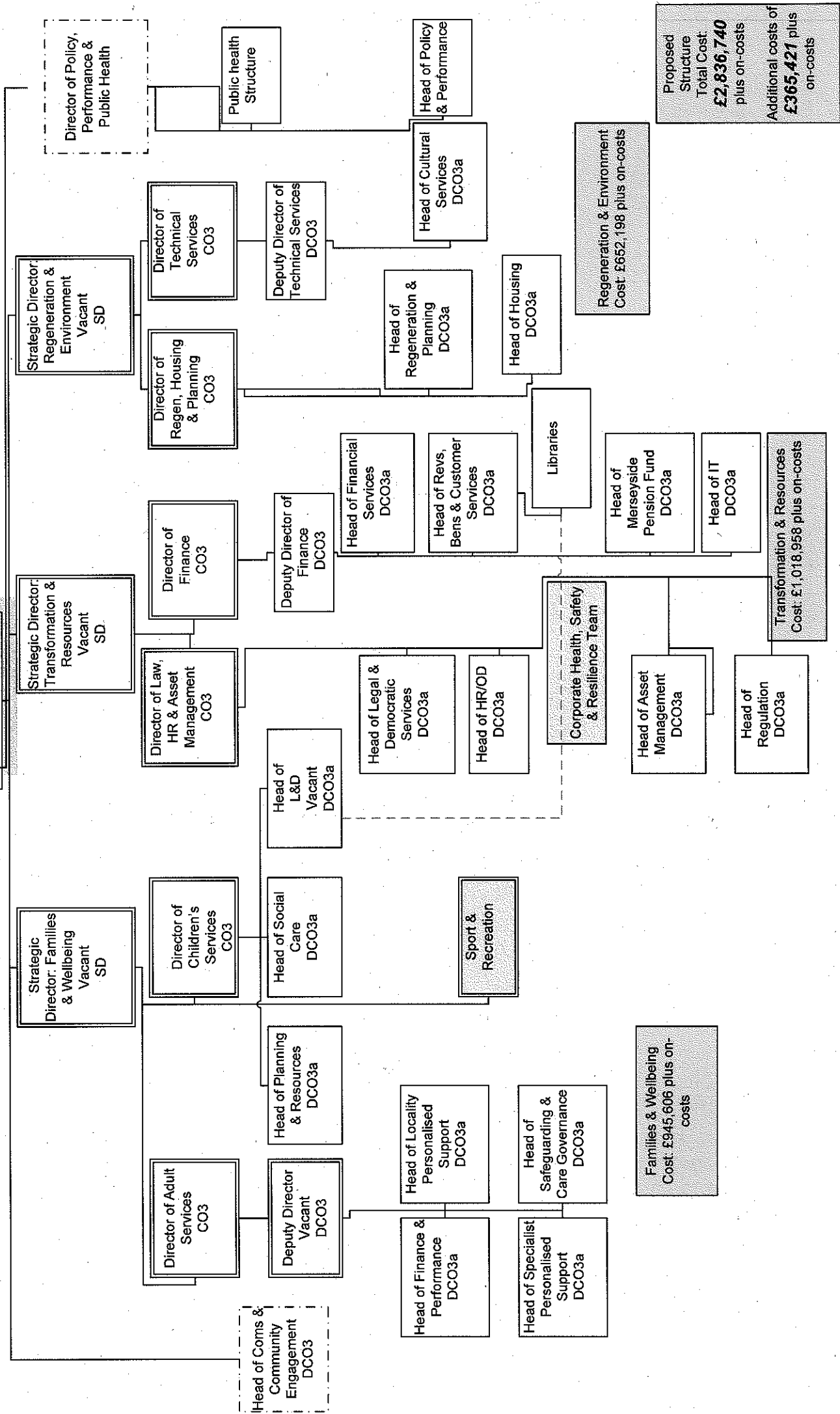
Proposed Senior Management Structure

10/09/2012

Key: Highlights service area departmental move

Cex Office
Cost: £219,973 plus on-costs

Chief Executive
CE



Families & Wellbeing
Cost: £945,606 plus on-costs

Regeneration & Environment
Cost: £852,198 plus on-costs

Transformation & Resources
Cost: £1,018,958 plus on-costs

Proposed Structure
Total Cost
£2,836,740
plus on-costs
Additional costs of
£365,421 plus on-costs